



P L A N T E R W O R X
S I T E



PEBBLE PLANTER

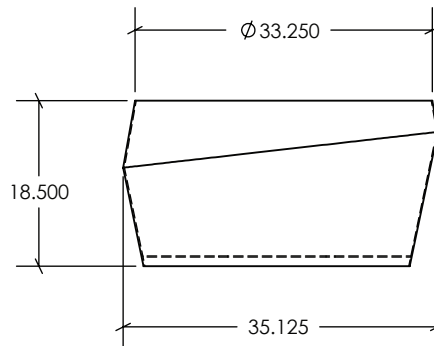
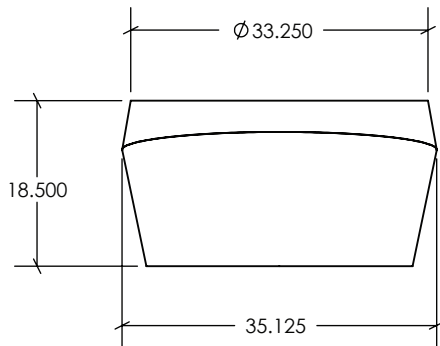
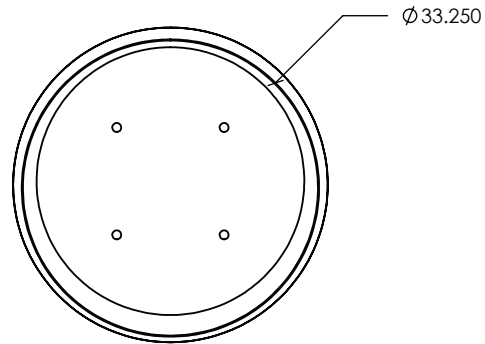
18.5"H x 33.25"DIA

MANUFACTURED FROM:
.25" ASTM A240 STAINLESS STEEL / 95 lbs
T-304 (T-316L BY REQUEST)
IN A NON-DIRECTIONAL SATIN FINISH,
.25" ASTM A588 CORTEN STEEL / 95 lbs
OR .25" ASTM B-209, 5052 ALUMINUM ALLOY / 32 lbs
WITH A POLYESTER BASED ARCHITECTURAL/MARINE
GRADE POWDER COAT FINISH
AVAILABLE IN STANDARD FINISHES OR IN ANY RAL COLOR

P L A N T E R W O R X 9 8 7 E S S E X S T B R O O K L Y N N Y 1 1 2 0 8
T 7 1 8 . 9 6 3 . 0 5 6 4 F 7 1 8 . 9 6 3 . 0 5 6 5
P L A N T E R W O R X . C O M



P L A N T E R W O R X S I T E



PEBBLE PLANTER 18.5"H x 33.25"DIA

MANUFACTURED FROM:
.25" ASTM A240 STAINLESS STEEL / 95 lbs
T-304 (T-316L BY REQUEST)
IN A NON-DIRECTIONAL SATIN FINISH,
.25" ASTM A588 CORTEN STEEL / 95 lbs
OR .25" ASTM B-209, 5052 ALUMINUM ALLOY / 32 lbs
WITH A POLYESTER BASED ARCHITECTURAL/MARINE
GRADE POWDER COAT FINISH

AVAILABLE IN STANDARD FINISHES OR IN ANY RAL COLOR

P L A N T E R W O R X 9 8 7 E S S E X S T B R O O K L Y N N Y 1 1 2 0 8
T 7 1 8 . 9 6 3 . 0 5 6 4 F 7 1 8 . 9 6 3 . 0 5 6 5
P L A N T E R W O R X . C O M